

Courtesy Of Peter Estephan Of RE/MAX Elite

\$729,900 - 2312 Frezenberg Avenue Nw, Edmonton

MLS® #E4243648

\$729,900

4 Bedroom, 4.00 Bathroom, 2,370 sqft
Single Family on 0.12 Acres

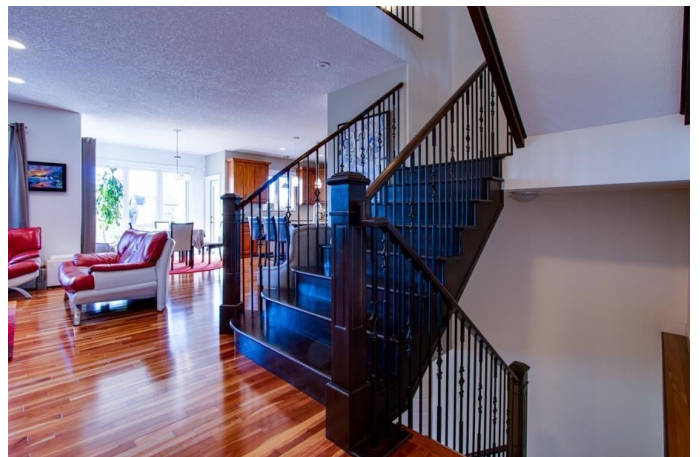
Griesbach, Edmonton, AB

This is the one you've been waiting for! 2370 sqft Fully Finished, Walkout basement, on Griesbach lake! 3 beds up and 1 down, 3.5 baths. Gleaming cherry hardwood flooring main and upper level. Granite countertops, high end stainless steel appliances, 9ft ceilings, open kitchen with centre island, bonus room, upper floor laundry, stone fireplace, and much more. Huge back yard! Enjoy your summers on the deck enjoying the beautiful view! Double attached garage. Must be seen to be appreciated. Close to all amenities!

Built in 2010

Essential Information

MLS® #	E4243648
Price	\$729,900
Bedrooms	4
Bathrooms	4.00
Full Baths	3
Half Baths	1
Square Footage	2,370
Acres	0.12
Year Built	2010
Type	Single Family
Sub-Type	Residential Detached Single Family
Style	2 Storey



Status ACTIVE

Community Information

Address 2312 Frezenberg Avenue Nw
Area Edmonton
Subdivision Griesbach
City Edmonton
County ALBERTA
Province AB
Postal Code T5E 5R9

Amenities

Features Ceiling 9 ft., Deck, No Smoking Home, Walkout Basement
Parking Double Garage Attached
of Garages 2
Is Waterfront Yes

Interior

Interior Carpet, Ceramic Tile, Hardwood
Interior Features Dishwasher-Built-In, Dryer, Fan-Ceiling, Garage Opener, Hood Fan, Refrigerator, Stove-Electric, Washer
Heating Forced Air-1
of Stories 3
Has Basement Yes
Basement Full, Fully Finished, Walkout

Exterior

Exterior Stone, Vinyl
Exterior Features Cul-De-Sac, Fenced, Golf Nearby, Landscaped, Playground Nearby, Public Transportation, Schools, Shopping Nearby, See Remarks, Backs Onto Lake, No Through Road
Roof Asphalt Shingles
Construction Wood Frame
Foundation Concrete

Additional Information

Date Listed May 12th, 2021

Data is deemed reliable but is not guaranteed accurate by the REALTORS® Association of Edmonton. Copyright 2021 by the REALTORS® Association of Edmonton. All rights reserved.
Listing information last updated on August 2nd, 2021 at 5:16am MDT