

Courtesy Of Alan Gee Of Re/max Elite

# \$788,800 - 5747 Keeping Crescent, Edmonton

MLS® #E4181018

## \$788,800

3 Bedroom, 4.00 Bathroom, 2,743 sqft  
Single Family on 0 Acres

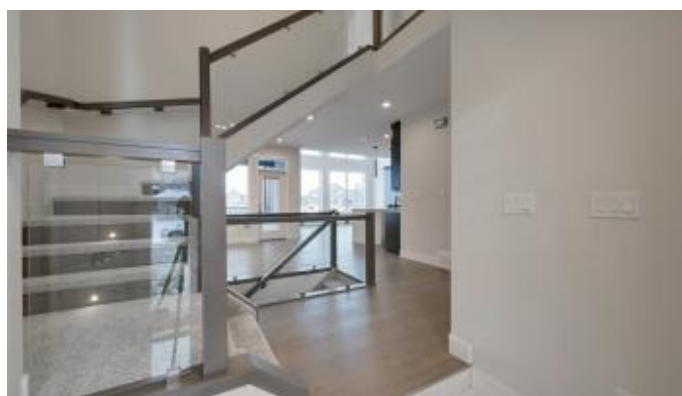
Keswick Area, Edmonton, AB

BRAND NEW STUNNING WALKOUT 2 sty exudes quality & luxury. 2743 sf contemporary home w/an open concept plan, perfect for entertaining. Nestled on a quiet street in prestigious Keswick backing to a gorgeous pond. Chef's kitchen will please the most discerning foodie- an abundance of sleek modern cabinetry, upgraded quartz counters, a huge island, high end stainless steel appliances incl a 36" gas top range & a huge walkthrough butlers pantry. The sunlit cheery home boasts a wall of floor to ceiling windows in the vaulted Great rm & a feature tiled wall for the linear gas FP. Main flr den/bedrm w/full bath. 3 bedrms upstairs, each w/their own ensuites incl a luxurious MBR w/spa like ensuite & massive W/I closet. Upper level laundry rm bonus rm. Stunning contemporary light fixtures, 8 ft drs, 9 ft ceilings on ALL three levels, glass railing & wide plank engineered hardwood & lots of ceiling details are but a few features of this home. 2 balconies overlooking the pond/trails. Acrylic stucco, 24x23 dbl garage

Built in 2018

## Essential Information

MLS® #	E4181018
Price	\$788,800
Bedrooms	3
Bathrooms	4.00



Full Baths	4
Square Footage	2,743
Acres	0.11
Year Built	2018
Type	Single Family
Sub-Type	Residential Detached Single Family
Style	2 Storey
Status	ACTIVE

### **Community Information**

Address	5747 Keeping Crescent
Area	Edmonton
Subdivision	Keswick Area
City	Edmonton
County	ALBERTA
Province	AB
Postal Code	T6W 0S5

### **Amenities**

Features	Ceiling 9 ft., Closet Organizers, Deck, No Animal Home, No Smoking Home, Patio, See Remarks
Parking	Double Garage Attached, Insulated, Over Sized
# of Garages	2
Garages	24x23
Is Waterfront	Yes

### **Interior**

Interior	Carpet, Ceramic Tile, Hardwood
Interior Features	Dishwasher-Built-In, Hood Fan, Oven-Built-In, Oven-Microwave, Refrigerator, Stove-Countertop Gas
Heating	Forced Air-1
Has Basement	Yes
Basement	Full, Unfinished
Fireplace	Yes
Fireplaces	Gas, Tile Surround
# of Stories	2

### **Exterior**

Exterior	Stone, Acrylic Stucco
----------	-----------------------

Exterior Features	Golf Nearby, Landscaped, Picnic Area, Playground Nearby, Public Transportation, Schools, Shopping Nearby, See Remarks, Backs Onto Lake
Roof	Asphalt Shingles
Construction	Wood Frame
Foundation	Concrete

### **School Information**

Elementary	ORMSBY
Middle	S. BRUCE SMITH
High	JASPER PL/MARGARET MARY

### **Additional Information**

HOA Fees Freq.     Annually

Listing information last updated on February 19th, 2020 at 8:16am MST