

Courtesy Of Melanie Boles Of Re/max Real Estate

\$250,000 - 4235 85 Street, Edmonton

MLS® #E4157539

\$250,000

3 Bedroom, 2.00 Bathroom, 1,093 sqft
Single Family on 0 Acres

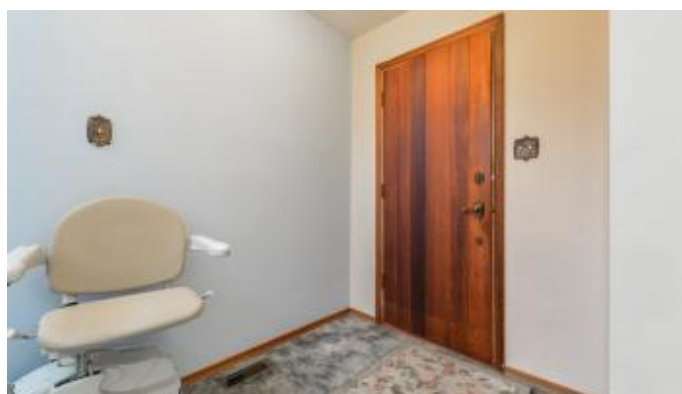
Tweddle Place, Edmonton, AB

Charming Starter Home or Investment Property. This two storey half duplex is in a great North Mill Woods location close to schools, public transportation, parks and playgrounds. A well taken care of property offering a generous L-shaped living room/dining room with sliding doors to your back deck and private back yard with water feature and loads of room for the kids to run around; offers a storage shed and room to park two vehicles and build a garage if you choose. Kitchen has been updated with gleaming new hardwood. The main floor offers the convenience of a two piece powder room. Upstairs offers three bedrooms and a three piece bath with oversized walk-in shower and a large linen closet. The basement is partially finished and ready for your future development with room for a family room, laundry and loads of storage. The entire home has been freshly painted including the ceilings. Upgrades include: furnace (10 years), hot water tank (4 years), & roof (7 years).

Built in 1974

Essential Information

MLS® #	E4157539
Price	\$250,000
Bedrooms	3
Bathrooms	2.00
Full Baths	1



Half Baths	1
Square Footage	1,093
Acres	0.09
Year Built	1974
Type	Single Family
Sub-Type	Half Duplex
Style	2 Storey
Status	ACTIVE

Community Information

Address	4235 85 Street
Area	Edmonton
Subdivision	Tweddle Place
City	Edmonton
County	ALBERTA
Province	AB
Postal Code	T6K 1B3

Amenities

Features	Deck
Parking Spaces	2
Parking	Off Street, Rear Drive Access

Interior

Interior	Carpet, Hardwood, Linoleum
Interior Features	Dryer, Hood Fan, Refrigerator, Storage Shed, Stove-Electric, Washer, Window Coverings
Heating	Forced Air-1
Has Basement	Yes
Basement	Full, Partly Finished
# of Stories	2

Exterior

Exterior	Stucco, Metal
Exterior Features	Fenced, Landscaped, Park/Reserve, Paved Lane, Playground Nearby, Public Transportation, Schools, Shopping Nearby, Back Lane, Backs Onto Park/Trees
Roof	Asphalt Shingles
Construction	Wood Frame

Foundation Concrete

School Information

Elementary St.Elizabeth

Middle St.Hilda/Edith Rogers

High Holy Trinity/J.Percy Page

Listing information last updated on July 15th, 2019 at 11:46pm MDT