

Courtesy Of Prashant Mahay Of Exp Realty

\$319,000 - 11534 11 Avenue, Edmonton

MLS® #E4157374

\$319,000

3 Bedroom, 3.00 Bathroom, 1,288 sqft
Condo / Townhouse on 0 Acres

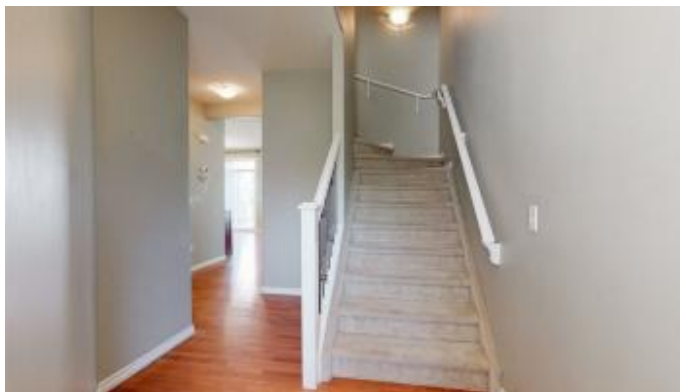
Rutherford, Edmonton, AB

Nestled in quiet and peaceful community of Rutherford, with a great curb appeal...3 bedrooms, 2.5 baths, front double attached garage half duplex style condominium, with low low condominium fee. The unit has hardwood floor on main level, a cozy living room with a gas fireplace with mantle, a homey kitchen and a dining area overseeing the back deck and a nice backyard and a 2 piece bath . There are 3 generous sized bedrooms on the upper level, 2 baths, and a family room in the basement with a wet bar. Long driveway can accommodate 4 cars + 2 cars in the garage.The condominium fee includes yard maintenance and snow removal.

Built in 2006

Essential Information

MLS® #	E4157374
Price	\$319,000
Bedrooms	3
Bathrooms	3.00
Full Baths	2
Half Baths	1
Square Footage	1,288
Acres	0.08
Year Built	2006
Type	Condo / Townhouse
Sub-Type	Half Duplex
Style	2 Storey



Status ACTIVE

Community Information

Address 11534 11 Avenue
Area Edmonton
Subdivision Rutherford
City Edmonton
County ALBERTA
Province AB
Postal Code T6W 1W8

Amenities

Features Air Conditioner, Deck, Vinyl Windows, Exterior Walls- 2x6'
Parking Double Garage Attached
of Garages 2

Interior

Interior Carpet, Hardwood
Interior Features Dishwasher-Built-In, Dryer, Hood Fan, Refrigerator, Stove-Electric, Washer, Window Coverings
Heating Forced Air-1
Has Basement Yes
Basement Full, Partly Finished
Fireplace Yes
Fireplaces Gas, Direct Vent
of Stories 2

Exterior

Exterior Vinyl
Exterior Features Golf Nearby, Landscaped, Playground Nearby, Public Transportation, Schools, Shopping Nearby, Airport Nearby, Flat Site, Low Maintenance Landscape
Roof Asphalt Shingles
Construction Wood Frame
Foundation Concrete

School Information

Elementary Johnny Bright K-9

Additional Information

Condo Fee \$188

Listing information last updated on July 16th, 2019 at 9:01pm MDT