

Courtesy Of Nadir Yegani Of Realty Executives North Star

\$454,900 - 8611 218 Street, Edmonton

MLS® #E4151907

\$454,900

3 Bedroom, 3.00 Bathroom, 1,959 sqft

Single Family on 0 Acres

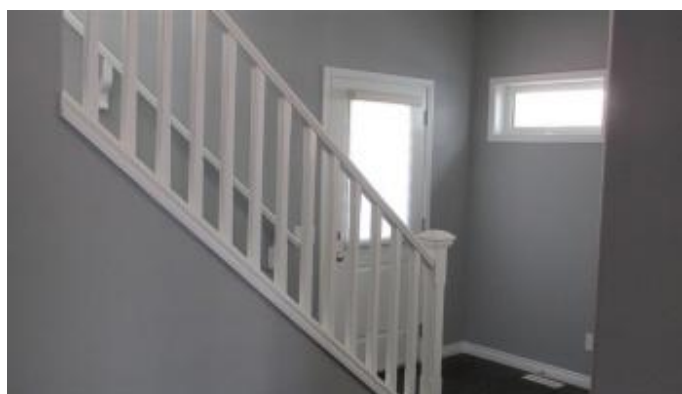
Rosenthal_EDMO, Edmonton, AB

2 storey home in ROSENTHAL with extensive walking trails and parks for outdoor recreation and leisure of all kinds. Main floor featuring 9' ceiling, hardwood and tile floors. The kitchen is beautifully finished with granite counters, crown moulding on the cabinets, tile backsplash, a walk-in pantry with glass door and large breakfast nook. The spacious living room with gas fireplace with contemporary tile surround. A den finished with double french door is perfect for a home office. Upper level offers a spacious master suite which features a 4 piece ensuite with Jacuzzi tub and a walk-in closet. A 10' ceiling high bonus room, a convenient laundry and 2 other good sized bedrooms. This home is closed to all amenities, schools, Costco, Anthony Henday and Whitemud freeway

Built in 2014

Essential Information

MLS® #	E4151907
Price	\$454,900
Bedrooms	3
Bathrooms	3.00
Full Baths	2
Half Baths	1
Square Footage	1,959
Acres	0.09
Year Built	2014



Type	Single Family
Sub-Type	Residential Detached Single Family
Style	2 Storey
Status	ACTIVE

Community Information

Address	8611 218 Street
Area	Edmonton
Subdivision	Rosenthal_EDMO
City	Edmonton
County	ALBERTA
Province	AB
Postal Code	T5T 4R5

Amenities

Features	See Remarks
Parking	Double Garage Attached
# of Garages	2

Interior

Interior	Carpet, Ceramic Tile, Hardwood
Interior Features	Air Conditioning-Central, Dishwasher-Built-In, Dryer, Garage Opener, Microwave Hood Cover, Refrigerator, Stove-Electric, Washer
Heating	Forced Air-1
Has Basement	Yes
Basement	Full, Unfinished
# of Stories	2

Exterior

Exterior	Stone, Vinyl
Exterior Features	Fenced, Landscaped, Playground Nearby, Schools, Shopping Nearby
Roof	Asphalt Shingles
Construction	Wood Frame
Foundation	Concrete

Listing information last updated on July 16th, 2019 at 12:01am MDT