

Courtesy Of Nadir Yegani Of Realty Executives North Star

\$334,900 - 3004 Harvey Crescent, Edmonton

MLS® #E4148670

\$334,900

3 Bedroom, 3.00 Bathroom, 1,496 sqft

Single Family on 0 Acres

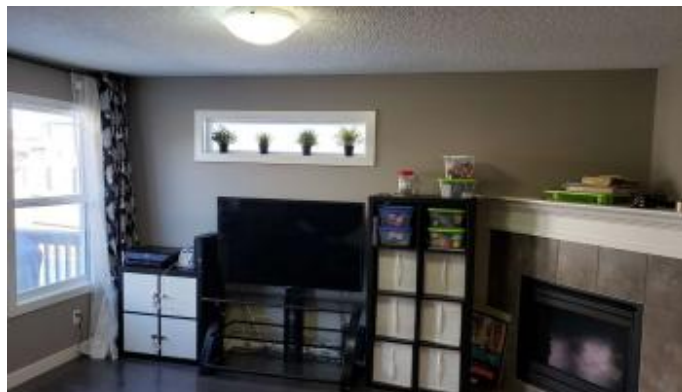
The Hamptons, Edmonton, AB

SPACIOUS AND MODERN 3 BEDROOMS HALF DUPLEX IN THE HAMPTONS . THIS HOME OFFERS GLEAMING HARDWOOD FLOORS ON THE MAIN FLOOR OPEN CONCEPT ,LARGE KITCHEN WITH A SIT UP BAR ,PLENTY OF CUPBOARDS AND A LARGE PANTRY. THE LARGE DINETTE OPENS TO THE DECK OVER LOOKING THE HUGE CORNER BACKYARD. THE LIVING ROOM IS GENEROUS IN SIZE WITH A CORNER GAS FIREPLACE. THE SECOND FLOOR HAS LARGE MASTER BEDROOM WITH WALK-IN CLOSET AND 4 PCS ENSUITE, 2 ADDITIONAL GOOD SIZE BEDROOMS , LAUNDRY ROOM AND A 4 PCS BATHROOM THIS HOME IS MINUTES FROM ALL AMENITIES , SCHOOLS , SHOPPING AND MAJOR FREEWAYS. GREAT VALUE, GREAT HOME!!

Built in 2012

Essential Information

| | |
|----------------|-----------|
| MLS® # | E4148670 |
| Price | \$334,900 |
| Bedrooms | 3 |
| Bathrooms | 3.00 |
| Full Baths | 2 |
| Half Baths | 1 |
| Square Footage | 1,496 |
| Acres | 0.10 |



| | |
|------------|---------------|
| Year Built | 2012 |
| Type | Single Family |
| Sub-Type | Half Duplex |
| Style | 2 Storey |
| Status | ACTIVE |

Community Information

| | |
|-------------|----------------------|
| Address | 3004 Harvey Crescent |
| Area | Edmonton |
| Subdivision | The Hamptons |
| City | Edmonton |
| County | ALBERTA |
| Province | AB |
| Postal Code | T6M 0N2 |

Amenities

| | |
|--------------|------------------------|
| Features | See Remarks |
| Parking | Single Garage Attached |
| # of Garages | 1 |

Interior

| | |
|-------------------|---|
| Interior | Carpet, Ceramic Tile, Hardwood |
| Interior Features | Microwave Hood Cover, Refrigerator, Stove-Electric, Washer, Dishwasher-Built-In, Dryer, Garage Opener |
| Heating | Forced Air-1 |
| Has Basement | Yes |
| Basement | Unfinished, Full |
| # of Stories | 2 |

Exterior

| | |
|-------------------|--|
| Exterior | Stone, Vinyl |
| Exterior Features | Fenced, Landscaped, Playground Nearby, Public Transportation, Schools, Shopping Nearby |
| Roof | Asphalt Shingles |
| Construction | Wood Frame |
| Foundation | Concrete |

Listing information last updated on July 23rd, 2019 at 8:01am MDT