

Courtesy Of Matthew Unrau Of Yegpro Realty

\$349,900 - 5843 105 Street, Edmonton

MLS® #E4148349

\$349,900

4 Bedroom, 1.00 Bathroom, 1,142 sqft
Single Family on 0 Acres

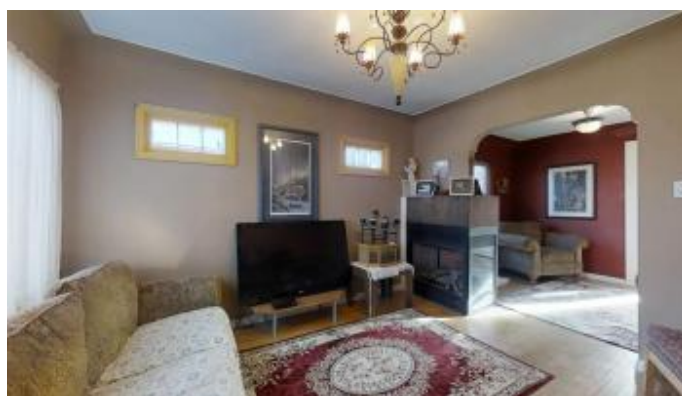
Pleasantview_EDMO, Edmonton, AB

INVESTOR ALERT!! Incredible deal in Pleasantview. This cosy 1100 sq ft, 1 and 1/2 story, situated on a 50x140 lot, zoned RF4, is one of the last single-family homes on the street! This charming 1940's home is in FANTASTIC shape and is ideal for any investor, small family or first-time home buyers! Walk in to the cosy living-room with original hardwood and gas fireplace. Step through to the updated kitchen with stainless steal appliances. A good-sized master bedroom, second bedroom and 4 piece bath finish the main floor. Walk upstairs to the comfy second level where there is a 3rd bedroom and some great storage space. In the mostly finished basement we have a 4th bedroom, family room, and bathroom renovation needing the final touches. Good size deck, yard, and double detached garage complete this home. Right ACROSS FROM A PARK, 10-15 minutes to downtown or whyte ave, the perfect location! Knock it down and build a duplex, live in it, rent it out, the options are endless! This one won't last long!

Built in 1940

Essential Information

MLS® #	E4148349
Price	\$349,900
Bedrooms	4
Bathrooms	1.00



Full Baths	1
Square Footage	1,142
Acres	0.16
Year Built	1940
Type	Single Family
Sub-Type	Residential Detached Single Family
Style	1 and Half Storey
Status	ACTIVE

Community Information

Address	5843 105 Street
Area	Edmonton
Subdivision	Pleasantview_EDMO
City	Edmonton
County	ALBERTA
Province	AB
Postal Code	T6H 2N3

Amenities

Features	See Remarks
Parking	Double Garage Detached, Heated, Insulated, Over Sized
# of Garages	2

Interior

Interior	Carpet, Hardwood, Linoleum
Interior Features	Dishwasher-Built-In, Dryer, Refrigerator, Stove-Electric, Washer, Window Coverings
Heating	Forced Air-1
Has Basement	Yes
Basement	Full, Unfinished
# of Stories	2

Exterior

Exterior	Metal
Exterior Features	Back Lane, Fenced, Fruit Trees/Shrubs, Landscaped, Playground Nearby, Schools, Shopping Nearby
Roof	Asphalt Shingles
Construction	Wood Frame
Foundation	Block

Listing information last updated on July 16th, 2019 at 12:01am MDT