

Courtesy Of John Rota Of Re/max Elite

\$337,430 - # 6 1051 Graydon Hill Boulevard, Edmonton

MLS® #E4148264

\$337,430

3 Bedroom, 3.00 Bathroom, 1,736 sqft
Condo / Townhouse on 0 Acres

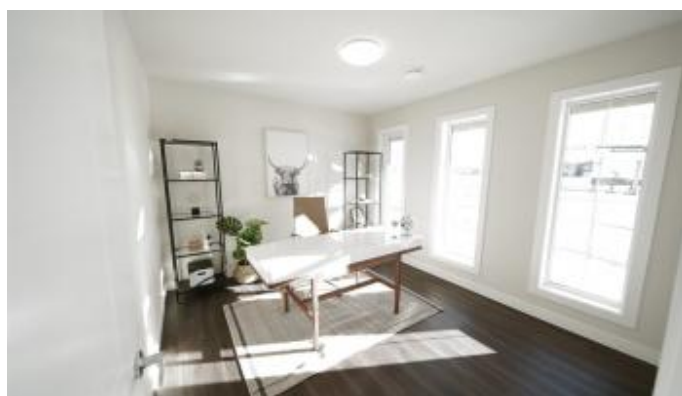
Graydon Hill, Edmonton, AB

STUNNING SHOW HOME! Welcome to your new PEAK 61 Townhome presenting the Summit layout in the exclusive Graydon Hill Community. Walk into your entry level 3 bed, 2 and 1/2 bath, 1736 SF home that wowâ€™s you with all of the extras. The Main floor boasts a huge flex room inspiring endless options, a double garage with ample storage potential and a mud room greeting you comfortably at the rear. The second floor sparks a bright and modern feel, with an open concept layout featuring 9ft ceilings, quartz countertops, Luxury vinyl plank-flooring, a half bath, plenty of pot lights, sleek soft close cabinetry, and not oneâ€™ but two generous patioâ€™s! Onto the third floor, you have three spacious rooms one being the show-stopping Master with ensuite with matching quartz countertops, soft close cabinetry and a massive walk-in closet complete with its own window. Third-floor laundry for your convenience, complete with a full bath for guests or family. Do not miss out on this show-stopping steal!

Built in 2019

Essential Information

MLS® #	E4148264
Price	\$337,430
Bedrooms	3
Bathrooms	3.00



Full Baths	2
Half Baths	1
Square Footage	1,736
Acres	0.00
Year Built	2019
Type	Condo / Townhouse
Sub-Type	Townhouse
Style	3 Storey
Status	ACTIVE

Community Information

Address	# 6 1051 Graydon Hill Boulevard
Area	Edmonton
Subdivision	Graydon Hill
City	Edmonton
County	ALBERTA
Province	AB
Postal Code	T6W 3J5

Amenities

Features	Carbon Monoxide Detectors, Ceiling 9 ft., Detectors Smoke, Hot Water Natural Gas, No Animal Home, No Smoking Home, Programmable Thermostat, HRV System
Parking	Double Garage Attached
# of Garages	2
Garages	19 x 22

Interior

Interior	Carpet, Ceramic Tile, Vinyl Plank
Interior Features	Garage Control, Garage Opener
Heating	Forced Air-1
Basement	None, No Basement
# of Stories	3

Exterior

Exterior	Stone, Vinyl
Exterior Features	Flat Site, Landscaped, Playground Nearby, Shopping Nearby
Roof	Asphalt Shingles
Construction	Wood Frame

Foundation Concrete

School Information

Elementary STEINHAUER

Middle D.S. MACKENZIE

High HARRY AINLAY

Additional Information

Condo Fee \$200

HOA Fees Freq. Annually

Listing information last updated on July 15th, 2019 at 11:46pm MDT