

Courtesy Of Barry Hoffman Of Homes & Gardens Real Estate Limited

\$131,900 - # 510 11325 83 Street, Edmonton

MLS® #E4147987

\$131,900

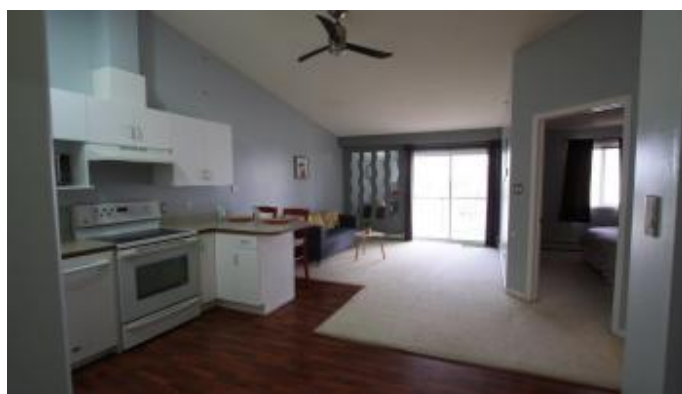
1 Bedroom, 1.00 Bathroom, 584 sqft

Condo / Townhouse on 0 Acres

Parkdale_EDMO, Edmonton, AB

Charming, immaculately kept top floor apartment features, high vaulted ceilings, a lovely view of ravine, & lots of natural light exposure. This charming open concept layout is within minutes of Public Transit/LRT, shopping, downtown, Commonwealth Stadium, parks, & swimming. All of these amazing amenities are within walking distance. It also includes 2 parking stalls. The kitchen features lots of cupboards, & the convenience of a breakfast nook. This little treasure also features a large deck for enjoying those warm summer nights, very large master bedroom that will easily accommodate a kingsize bed as well as other bedroom furniture, large closet, in-suite-laundry and a 4 piece bathroom. The unit also features lots of in-suite storage. A great starter home for a young couple, or a single person. Would also be a great investment property. Immediate possession available. Welcome Home!

Built in 2004



Essential Information

MLS® #	E4147987
Price	\$131,900
Bedrooms	1
Bathrooms	1.00
Full Baths	1
Square Footage	584
Acres	0.00

Year Built	2004
Type	Condo / Townhouse
Sub-Type	Lowrise Apartment
Style	Single Level Apartment
Status	ACTIVE

Community Information

Address	# 510 11325 83 Street
Area	Edmonton
Subdivision	Parkdale_EDMO
City	Edmonton
County	ALBERTA
Province	AB
Postal Code	T5B 4W5

Amenities

Features	Ceiling 10 ft., No Smoking Home, Patio
Parking Spaces	2
Parking	Stall

Interior

Interior	Carpet, Ceramic Tile, Laminate Flooring
Interior Features	Dishwasher-Built-In, Dryer, Refrigerator, Stove-Electric, Washer, Window Coverings
Heating	Hot Water
Basement	None, No Basement
# of Stories	1

Exterior

Exterior	Stucco
Exterior Features	Public Transportation, Ravine View, Schools, Shopping Nearby, View Downtown
Roof	Asphalt Shingles
Construction	Wood Frame
Foundation	Concrete

Additional Information

Condo Fee	\$260
-----------	-------

Listing information last updated on July 18th, 2019 at 3:01am MDT