

Courtesy Of Samantha Cowan Of Purplebricks

\$169,900 - # 2221 320 Clareview Station Drive, Edmonton

MLS® #E4138886

\$169,900

1 Bedroom, 1.00 Bathroom, 619 sqft

Condo / Townhouse on 0 Acres

Clareview Town Centre, Edmonton, AB

Bright, cozy and conveniently placed one bedroom, one bath apartment A mere minute to LRT/bus transit, 20 minutes to city centre, the U of A and NAIT, Easy access to Anthony Henday and Downtown connectors. Major stores are an easy few minutes walk. Spotless with high end SS appliances, bright large living room. This quiet building has an elevator, gym and a keyless entry system. Titled parking spot with power. Heat and water are included in condo fees. Ideal for student, couple or for investment.

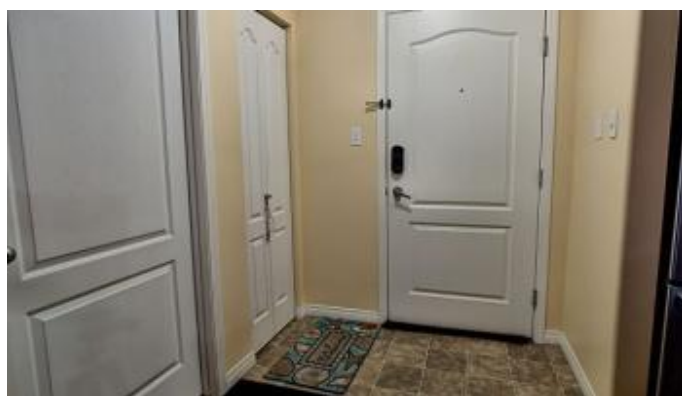
Built in 2008

Essential Information

MLS® #	E4138886
Price	\$169,900
Bedrooms	1
Bathrooms	1.00
Full Baths	1
Square Footage	619
Acres	0.00
Year Built	2008
Type	Condo / Townhouse
Sub-Type	Lowrise Apartment
Style	Single Level Apartment
Status	ACTIVE

Community Information

Address # 2221 320 Clareview Station Drive



Area	Edmonton
Subdivision	Clareview Town Centre
City	Edmonton
County	ALBERTA
Province	AB
Postal Code	T5Y 0E5

Amenities

Features	Laundry-In-Suite, Secured Parking, Security Door, Social Rooms
Parking Spaces	1
Parking	Stall

Interior

Interior	Carpet, Linoleum
Interior Features	Dishwasher-Built-In, Dryer, Oven-Microwave, Refrigerator, Stove-Electric, Washer, Window Coverings
Heating	Hot Water
Basement	None, No Basement
# of Stories	1

Exterior

Exterior	Stone, Vinyl
Exterior Features	Landscaped, Public Transportation, Schools, Shopping Nearby
Roof	Asphalt Shingles
Construction	Wood Frame
Foundation	Concrete

Additional Information

Condo Fee	\$288
-----------	-------

Listing information last updated on June 16th, 2019 at 4:16pm MDT